

TRAINING Epsilon

SPS 512 Easy

Original training document



2014/12

PALFINGER AG
Franz-Wolfram-Scherer-Straße 24
5020 Salzburg / Austria
www.palfinger.com

Index

1	General.....	4
1.1	Introduction and handling of this document.....	4
1.2	Validity.....	4
2	Description	5
2.1	Start.....	5
2.2	Value	6
2.3	Communication.....	8
2.4	Upload on Unit.....	9

1 General

1.1 Introduction and handling of this document

This PALFINGER training document is a technical description about systems on a loader crane. It will be expensed for PALFINGER trainings on loader cranes and should be a reference book for service and repair work.

These training documents have been produced for PALFINGER service workshops. An appropriate knowledge about the product and a basic education will be assumed.

1.2 Validity

This training document applies without any time limitation for the described system.

It is possible due to further developments that newer versions of this document are already available.

The respectively newest edition of this training document and further technical documents are available on the PALFINGER Extranet in the range Palipedia / service documents.

Registration can be done at <https://www.palfinger.com>

PALFINGER keeps the right to change the documents at any times without notice.

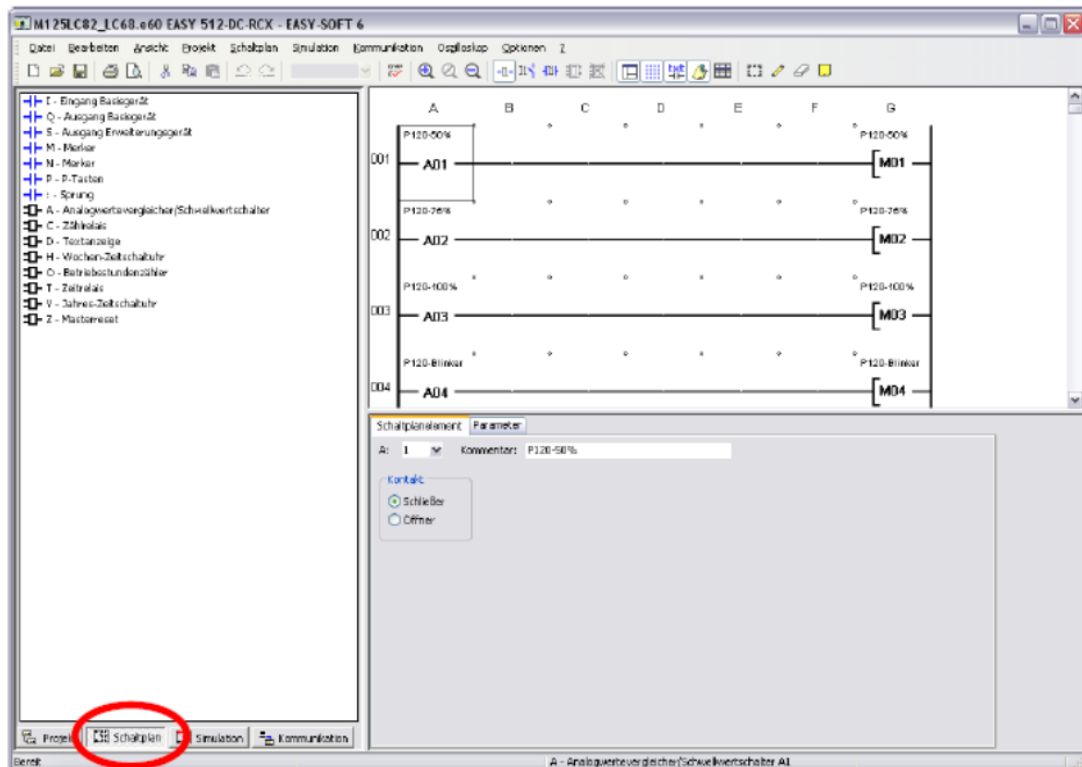
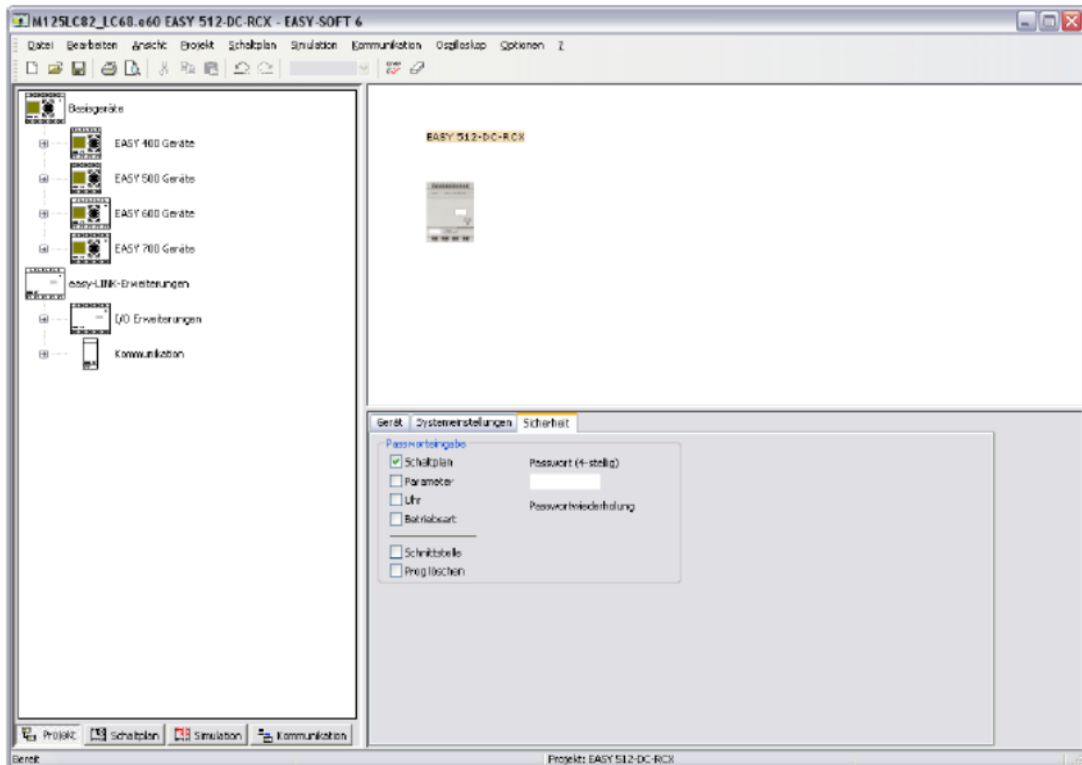
© Copyright by PALFINGER

Copying (also in Extracts) only after written permission from:

PALFINGER AG
Franz-Wolfram-Scherer-Straße 24
A-5020 Salzburg/Austria

2 Description

2.1 Start:



Click on Schaltplan (wiring diagram)

2.2 Value

Value A01- A05 are for crane type M125LC82, also below for M125LC68

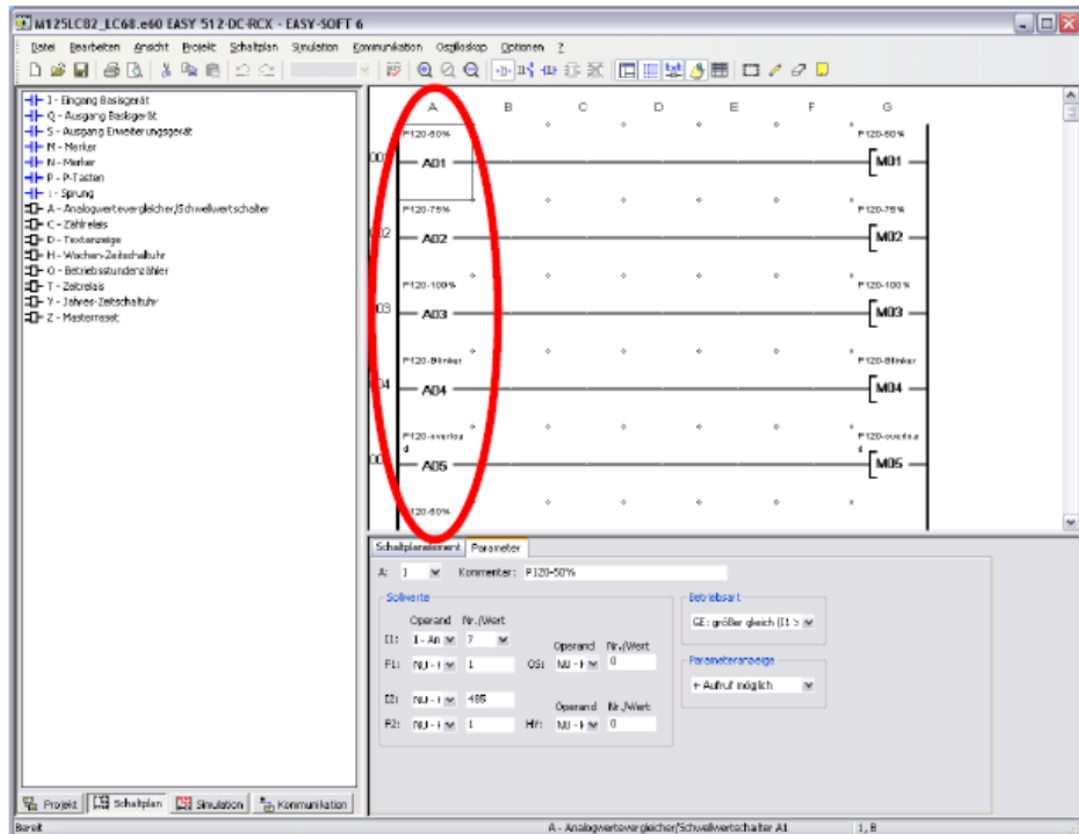
A01: 50% lifting capacity

A02: 75% lifting capacity

A03: 100% lifting capacity

A04: 90% warning light

A05: constant red light for overload



The screenshot displays the EASY-SOFT 6 software interface. On the left, a project tree lists components like 'Eingang Baugruppe', 'Ausgang Baugruppe', and 'Analogwertvergleich/Schwellwertschalter'. The main area shows a ladder logic diagram with five rungs (001-005). Each rung contains a normally open contact labeled 'P120-...' and a coil labeled 'M01' through 'M05'. The value '715' in the parameter editor for rung 005 is circled in red.

The parameter editor for rung 005 is titled 'Schwellwert | Parameter' and shows the following table:

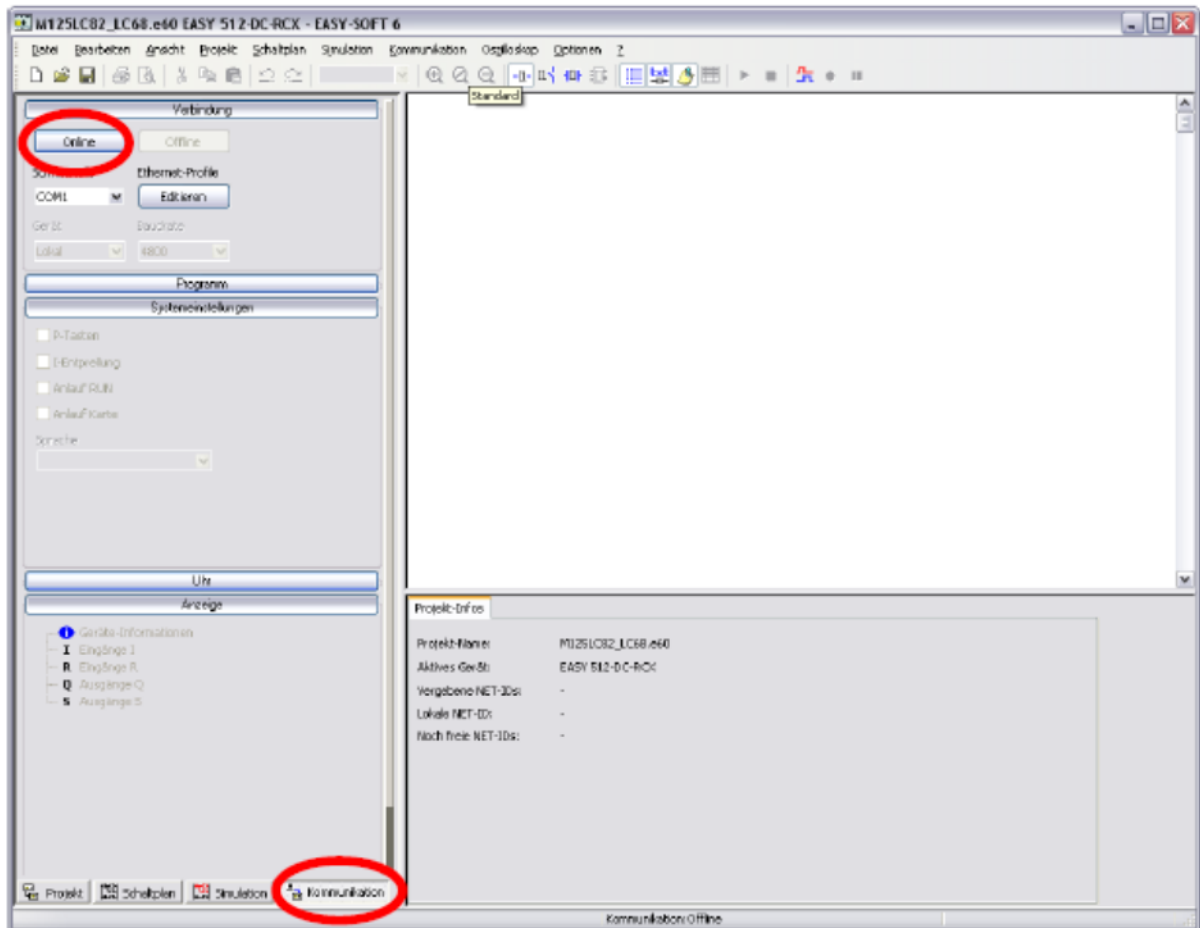
Operand	Nr./Wert	Operand	Nr./Wert
I1	I-An 7 M	OS	MU → M 0
P1	MU → M 1		
I2	MU → M 715	Operand	Nr./Wert
P2	MU → M 1	Hf:	MU → M 0

Additional options in the editor include 'Betriebsart' (GE: größer gleich 01 : M) and 'Parameteranzeige' (+ Aufruf möglich : M).

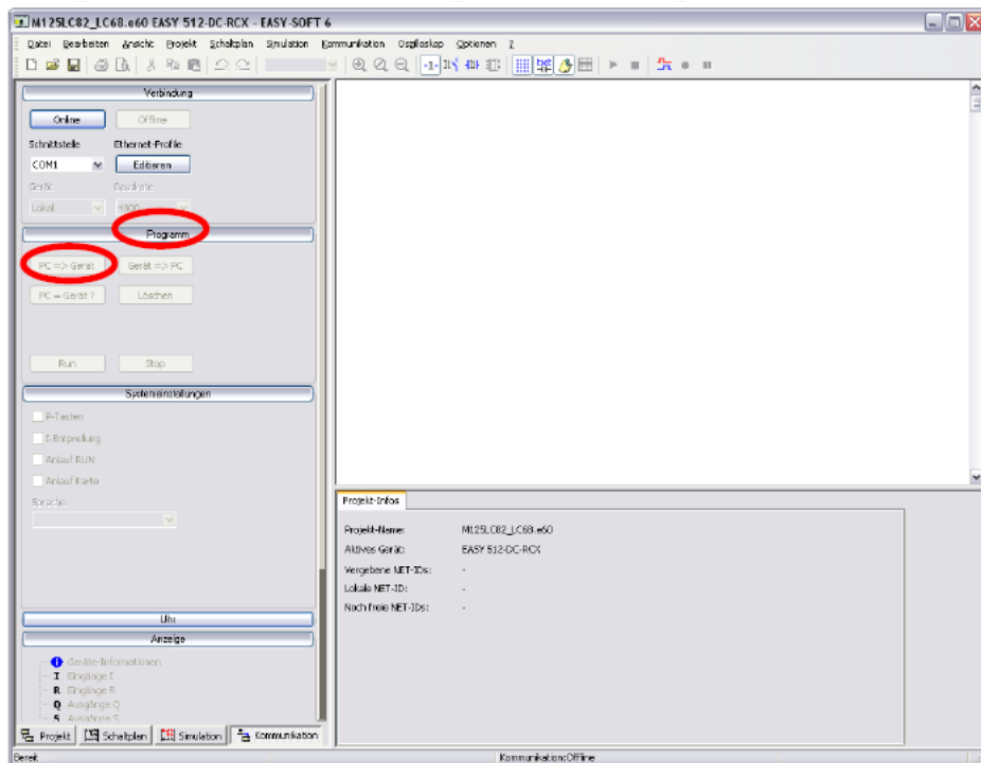
Change value: double click on value (for example A05) → Parameter, and change value

2.3 Communication

For communication click on Kommunikation (communication) then click on Online



2.4 Upload on Unit



Change with click on Programm

Upload program with click on PC→Gerät